



UNIVERSITY OF CAMBRIDGE INTERNATIONAL EXAMINATIONS  
International General Certificate of Secondary Education

CANDIDATE  
NAME

CENTRE  
NUMBER

--	--	--	--	--

CANDIDATE  
NUMBER

--	--	--	--

\* 8 1 0 3 2 0 2 4 4 7 \*

**BIOLOGY**

**0610/31**

Paper 3 Extended

**October/November 2010**

**1 hour 15 minutes**

Candidates answer on the Question Paper.

No Additional Materials are required.

**READ THESE INSTRUCTIONS FIRST**

Write your Centre number, Candidate number and name on all the work you hand in.

Write in dark blue or black pen.

You may use a pencil for any diagrams or graphs.

Do not use staples, paper clips, highlighters, glue or correction fluid.

**DO NOT WRITE IN ANY BARCODES.**

Answer **all** questions.

At the end of the examination, fasten all your work securely together.

The number of marks is given in brackets [ ] at the end of each question or part question.

For Examiner's Use	
1	
2	
3	
4	
5	
6	
7	
<b>Total</b>	

This document consists of **18** printed pages and **2** blank pages.



- 1 Fig. 1.1 shows a vertical section through a flower of soybean, *Glycine max*, following self-pollination. Fig. 1.2 shows part of the section at a higher magnification.

For  
Examiner's  
Use

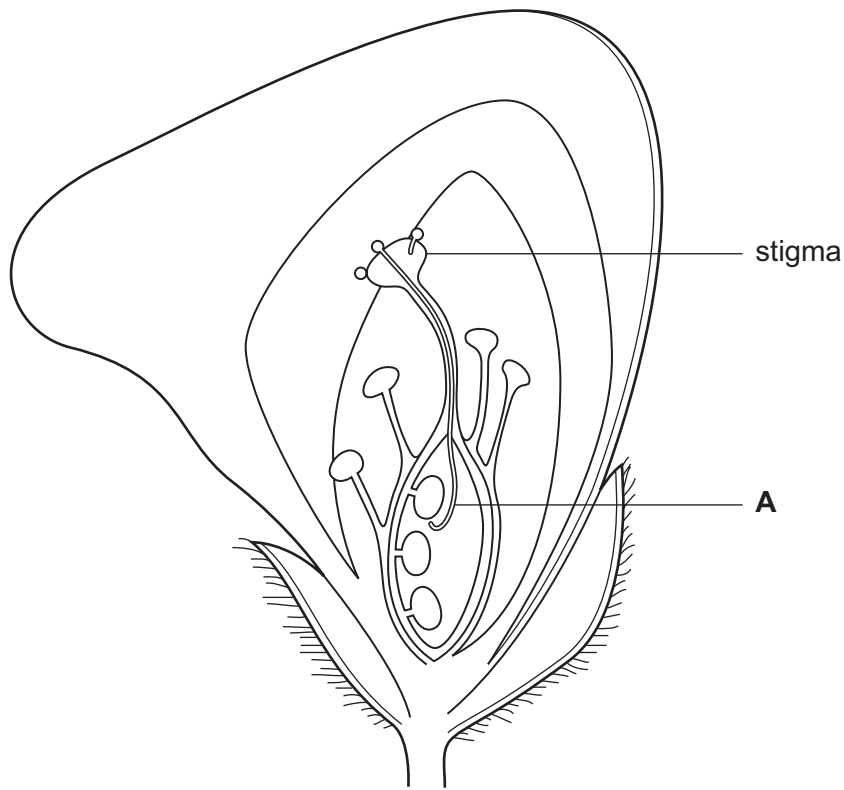


Fig. 1.1

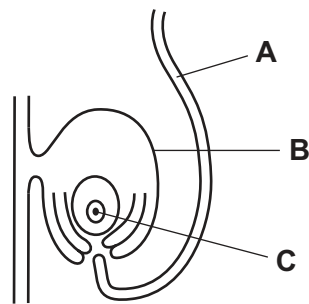


Fig. 1.2

- (a) (i) Name the parts labelled **A** to **C** shown in Figs. 1.1 and 1.2.

**A** .....

**B** .....

**C** ..... [3]

(ii) Describe what happens to the structures shown in Figs. 1.1 and 1.2 to bring about fertilisation. You may refer to the structures labelled **A** to **C** by their letters if you wish.

.....

.....

.....

.....

.....

..... [3]

(iii) Explain the advantages **and** disadvantages of self-pollination for flowering plants, such as soybean.

*advantages* .....

.....

.....

.....

*disadvantages* .....

.....

.....

.....

..... [4]

(b) Soybean is a dicotyledonous plant.

(i) Name the genus to which the soybean belongs.

..... [1]

(ii) State two features which are **only** found in dicotyledonous plants.

1. ....

2. .... [2]

[Total: 13]

2 The human menstrual cycle is controlled by four hormones. Fig. 2.1 is a diagram that shows the site of production and the target organs of these hormones.

For  
Examiner's  
Use

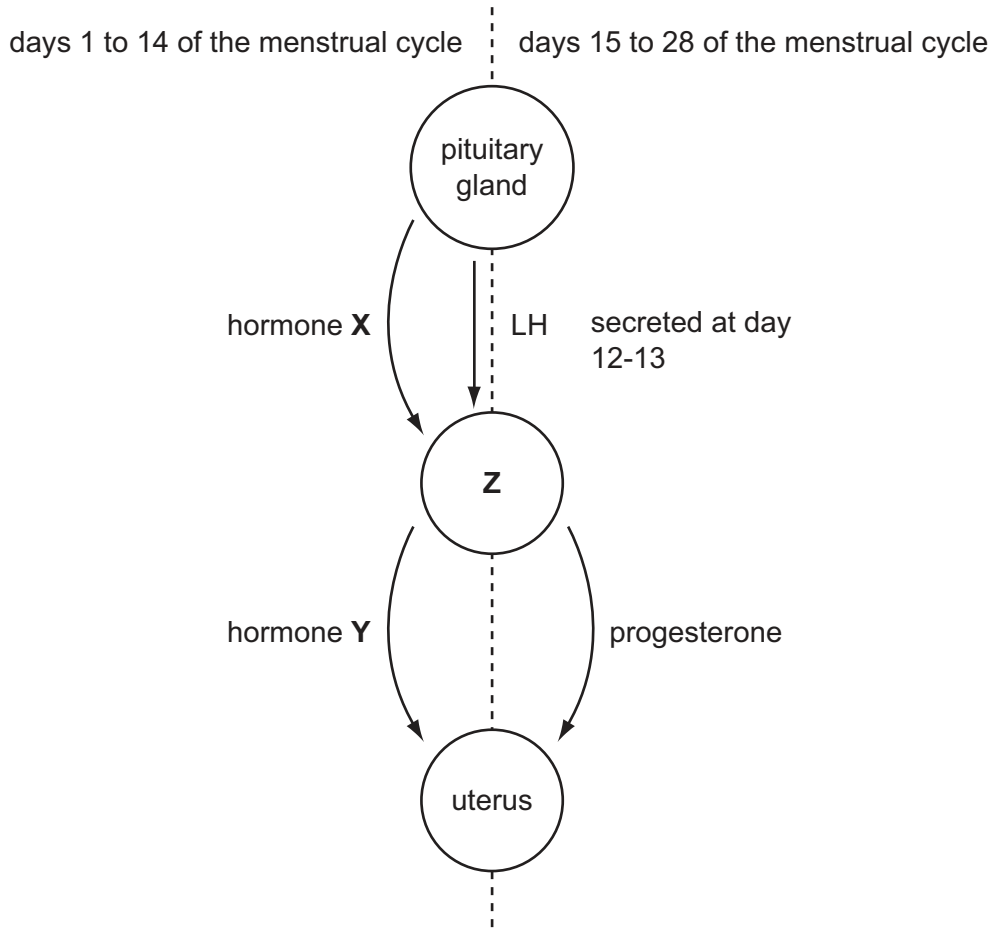


Fig. 2.1

(a) (i) Name hormones X and Y.

X .....

Y ..... [2]

(ii) Name organ Z.

..... [1]

(b) Describe the roles of progesterone during the menstrual cycle **and** during pregnancy.

.....  
.....  
.....  
.....  
.....  
.....  
..... [3]

For  
Examiner's  
Use

(c) Many medical experts agree that breast-feeding of babies is better than bottle-feeding using formula milk.

State **two** advantages and **one** disadvantage of breast-feeding.

*advantage 1* .....  
.....  
*advantage 2* .....  
.....  
*disadvantage* .....  
..... [3]

[Total: 9]

3 (a) Define the term *aerobic respiration*.

.....  
.....  
.....  
..... [2]

During exercise the movement of the ribcage enables air to enter the lungs.

(b) Describe how the ribcage is moved during inspiration (breathing in) and explain how this causes air to enter the lungs.

.....  
.....  
.....  
.....  
.....  
.....  
.....  
..... [4]

(c) Explain how the ribcage returns to its resting position during expiration (breathing out).

.....  
.....  
.....  
..... [2]

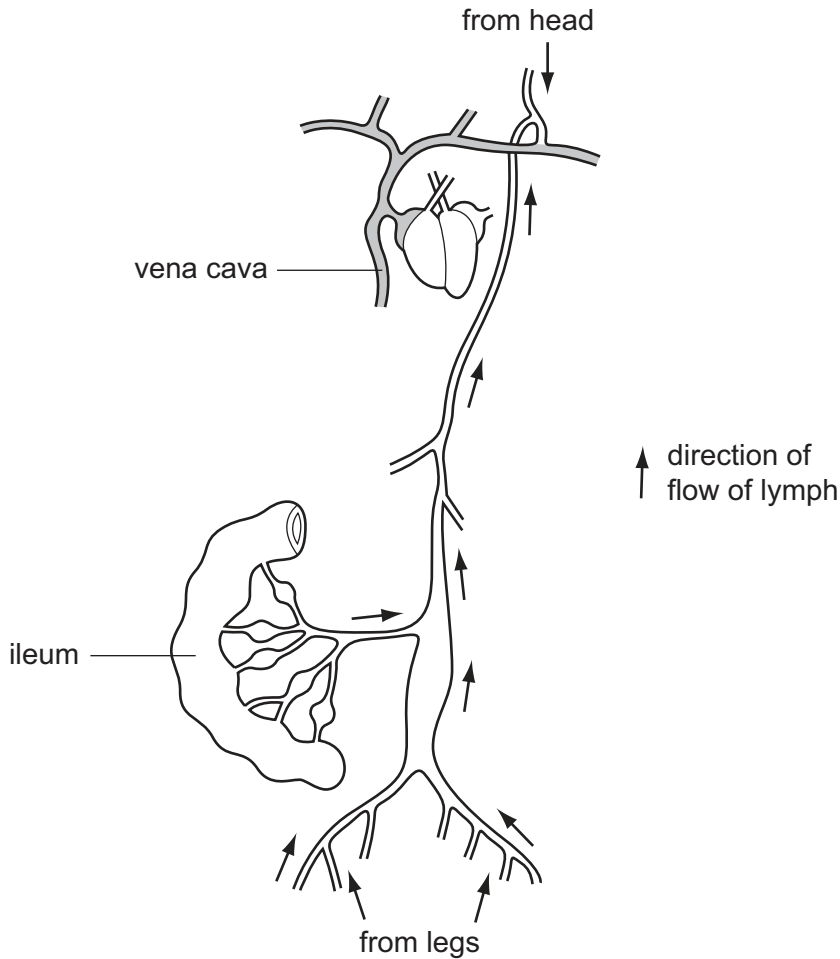


4 The lymphatic system consists of:

- thin-walled lymph vessels that drain tissue fluid from many organs of the body
- lymph nodes that contain the cells of the immune system

The fluid in the lymph vessels is moved in a way similar to the movement of blood in veins.

Fig. 4.1 shows part of the lymphatic system.



**Fig. 4.1**

(a) Suggest how lymph is moved in the lymph vessels.

.....

.....

.....

..... [2]



(b) After a meal rich in fatty foods, the lymph leaving the ileum is full of fat droplets.

Explain why there are fat droplets in the lymph leaving the ileum.

.....

.....

.....

.....

..... [2]

*For  
Examiner's  
Use*

Lymph flows through lymph nodes. Fig. 4.2 shows the action of white blood cells in a lymph node when bacteria are present.

For  
Examiner's  
Use

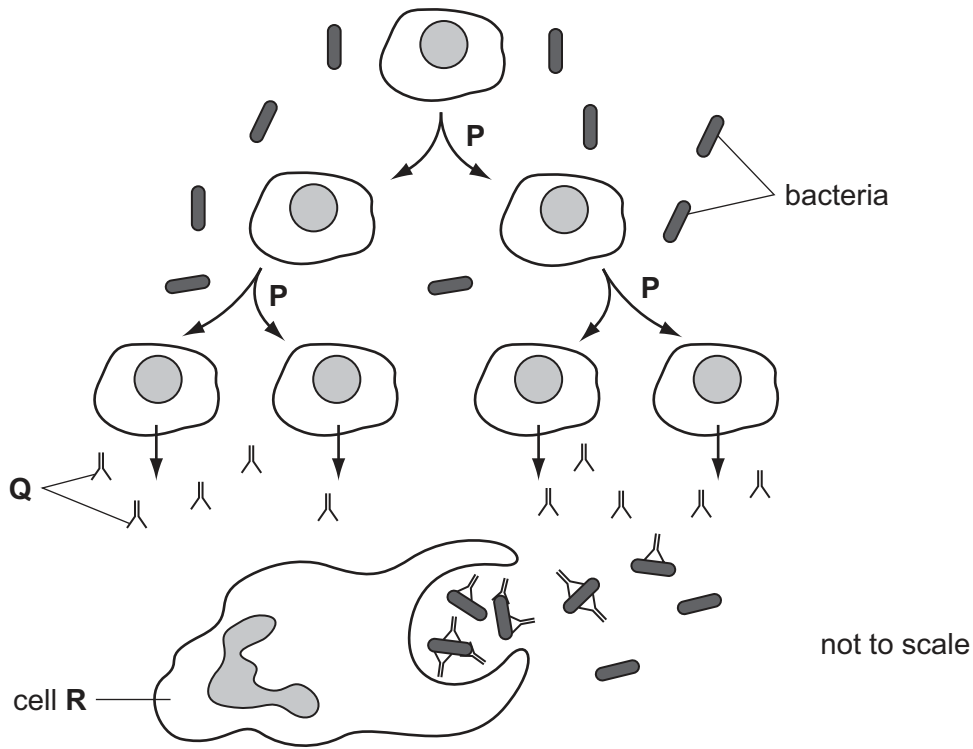


Fig. 4.2

(c) (i) Name the type of nuclear division shown at P in Fig. 4.2.

..... [1]

(ii) Name the molecules labelled Q in Fig. 4.2.

..... [1]

(iii) Describe how bacteria are destroyed by cell R.

.....  
 .....  
 .....  
 .....  
 .....  
 .....  
 .....  
 ..... [3]

**Question 4 continues on Page 12**



(e) Many different antibiotics are used.

Suggest why some antibiotics are used less frequently than others.

.....

.....

.....

.....

.....

.....

.....

..... [3]

[Total: 15]

For  
Examiner's  
Use

- 5 Marine conservationists are concerned that fish stocks in the sea are decreasing. Drastic measures will have to be taken to stop the extinction of many fish species.

Fig. 5.1 shows a marine food web. Tuna are large carnivorous fish that are an important human food. Dolphins may be caught in fishermen's nets and die.

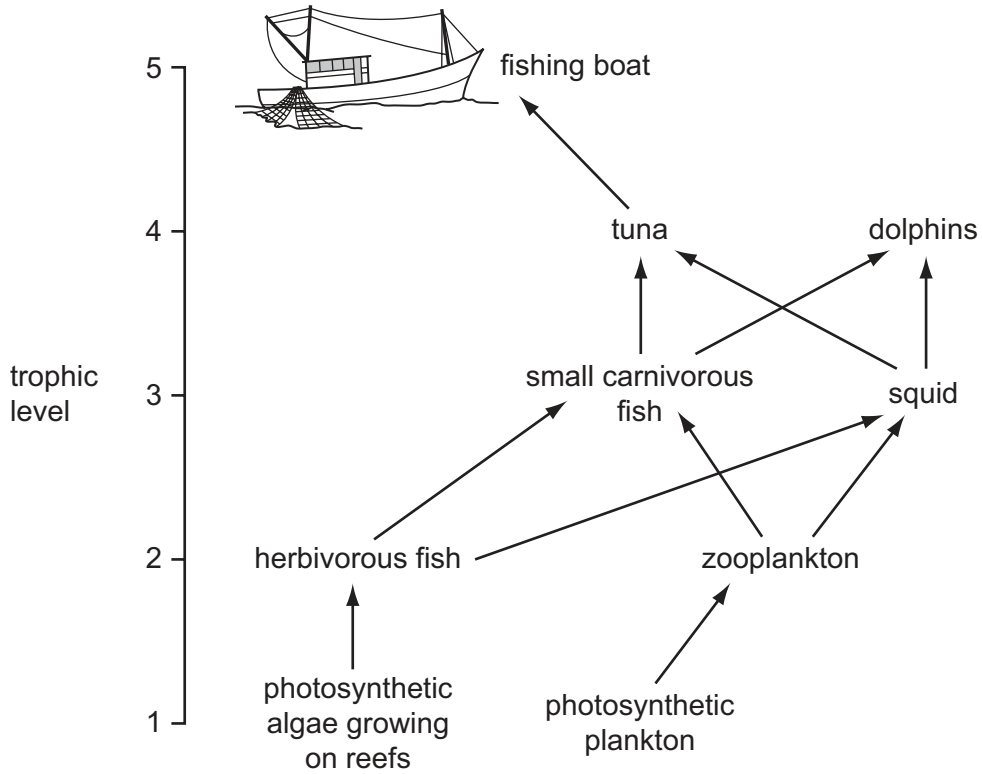


Fig. 5.1

- (a) State the names given to trophic levels 1 and 3.

1 ..... [2]

3 .....



6 *Daphnia* is a small arthropod animal found in freshwater. The population of *Daphnia* in a lake in Oregon (in the northern temperate region) was sampled at regular intervals between March and November in 2006 and 2007. During 2006 there were very few *Daphnia* in any of the samples. At the end of that year fish were removed from the lake.

For  
Examiner's  
Use

- The population of *Daphnia* in March, April and May 2007 was 1 animal per m<sup>3</sup> of water sampled.
- The population then increased exponentially to 100 000 per m<sup>3</sup> at the beginning of July.
- By the end of August the population had decreased to 10 000 per m<sup>3</sup> and the population remained at this number until the end of November.

(a) Sketch a line on Fig. 6.1 to show the population of *Daphnia* from March to the end of November 2007. [3]

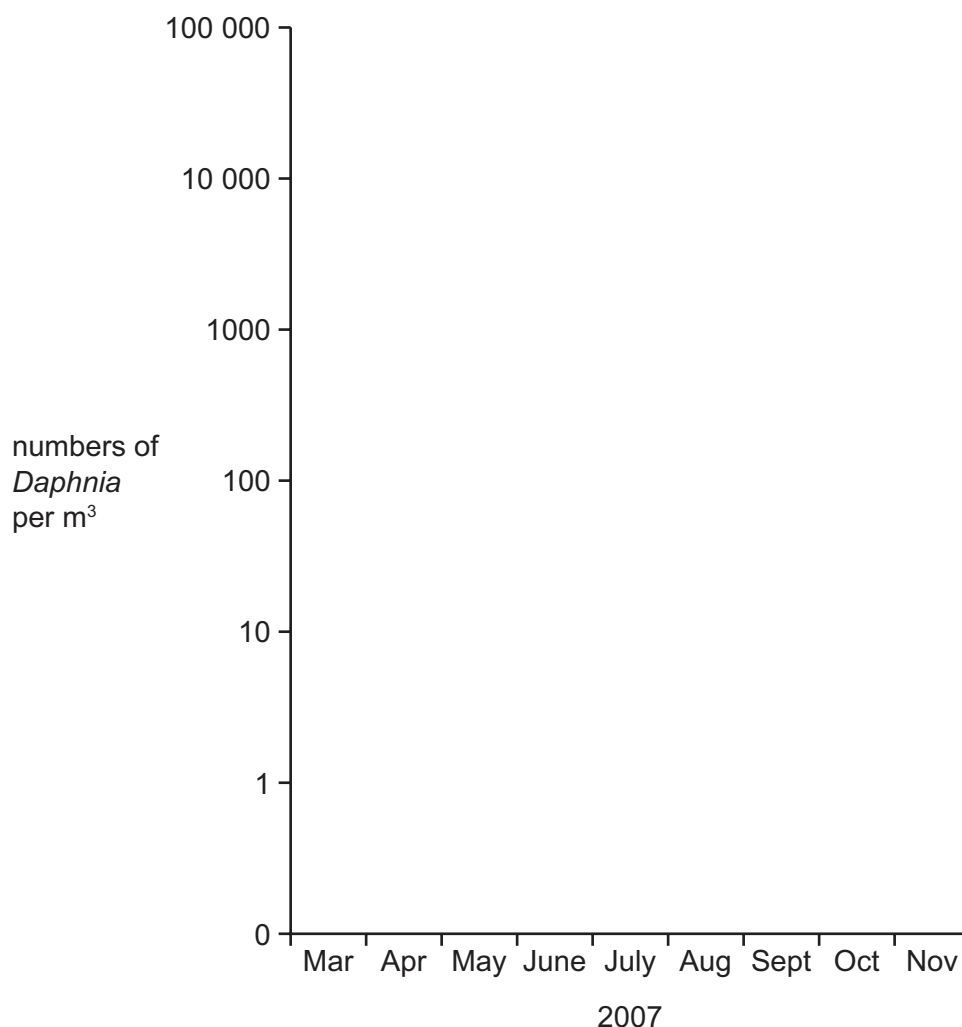


Fig. 6.1



(b) Suggest why there were very few *Daphnia* present in the lake in 2006.

.....  
.....  
.....  
..... [2]

(c) Explain the changes in the population of *Daphnia* in 2007.

.....  
.....  
.....  
.....  
.....  
.....  
.....  
.....  
.....  
.....  
.....  
..... [4]

[Total: 9]

For  
Examiner's  
Use

- 7 Seeds of the mung bean, *Phaseolus aureus*, were germinated and grown in a dish for a few days in the dark. The dish was then placed as shown in Fig. 7.1 **A**.

Fig. 7.1 **B** shows the seedlings after a further two days in the dark.

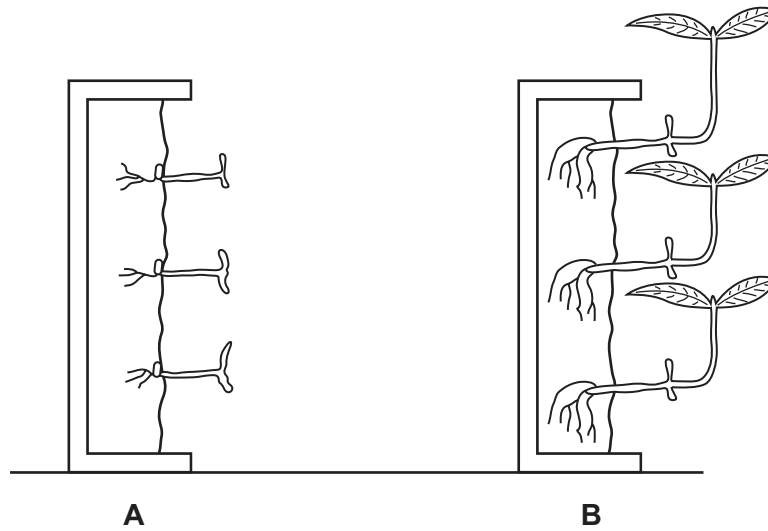


Fig. 7.1

- (a) Name the response shown by the roots in Fig. 7.1.

..... [1]

- (b) Suggest why the seedlings were kept in the dark during this investigation.

.....  
.....  
..... [1]

- (c) Explain why it is important for their early growth that the roots and shoots of seedlings respond in the way shown in Fig. 7.1**B**.

.....  
.....  
.....  
.....  
.....  
..... [2]

(d) The response shown by the shoots in Fig. 7.1B is coordinated by auxins.

Explain how auxins bring about this growth response in shoots.

.....

.....

.....

.....

.....

.....

.....

..... [3]

(e) Weed seedlings are sprayed with synthetic auxins to kill them.

Suggest how these weedkillers spread throughout the plant.

.....

.....

.....

.....

..... [2]

[Total: 9]

## BLANK PAGE

---

*Copyright Acknowledgements:*

- Figure 4.3 © adapted from: World Health Organisation antibiotic graphs;  
<http://apps.who.int/medicinedocs/en/d/Js7920e/1.html>  
<http://apps.who.int/medicinedocs/ed/d/Js7920e/>  
<http://apps.who.int/medicinedocs/collect/medicinedocs/pdf/s7920e/s7920e.pdf>
- Figure 5.1 © adapted from: <http://cordis.europa.eu/inco/tp5/icons/pauly1.gif>; Daniel Pauly; Fishing down marine food webs as an integrative concept; (University of British Columbia, Canada); ACP-EU Fisheries Research Report; Number 5; Page 8.

Permission to reproduce items where third-party owned material protected by copyright is included has been sought and cleared where possible. Every reasonable effort has been made by the publisher (UCLES) to trace copyright holders, but if any items requiring clearance have unwittingly been included, the publisher will be pleased to make amends at the earliest possible opportunity.

University of Cambridge International Examinations is part of the Cambridge Assessment Group. Cambridge Assessment is the brand name of University of Cambridge Local Examinations Syndicate (UCLES), which is itself a department of the University of Cambridge.